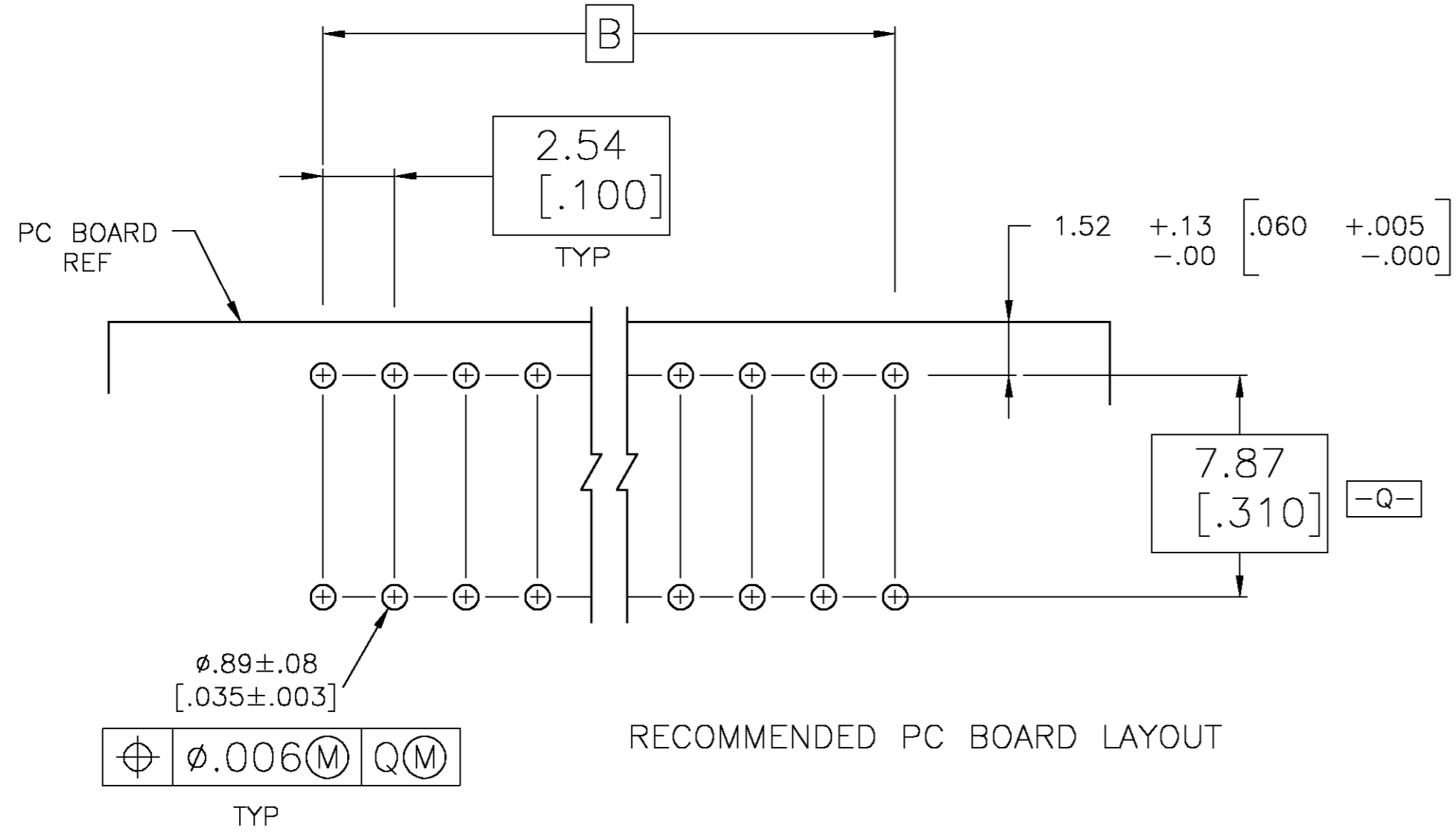
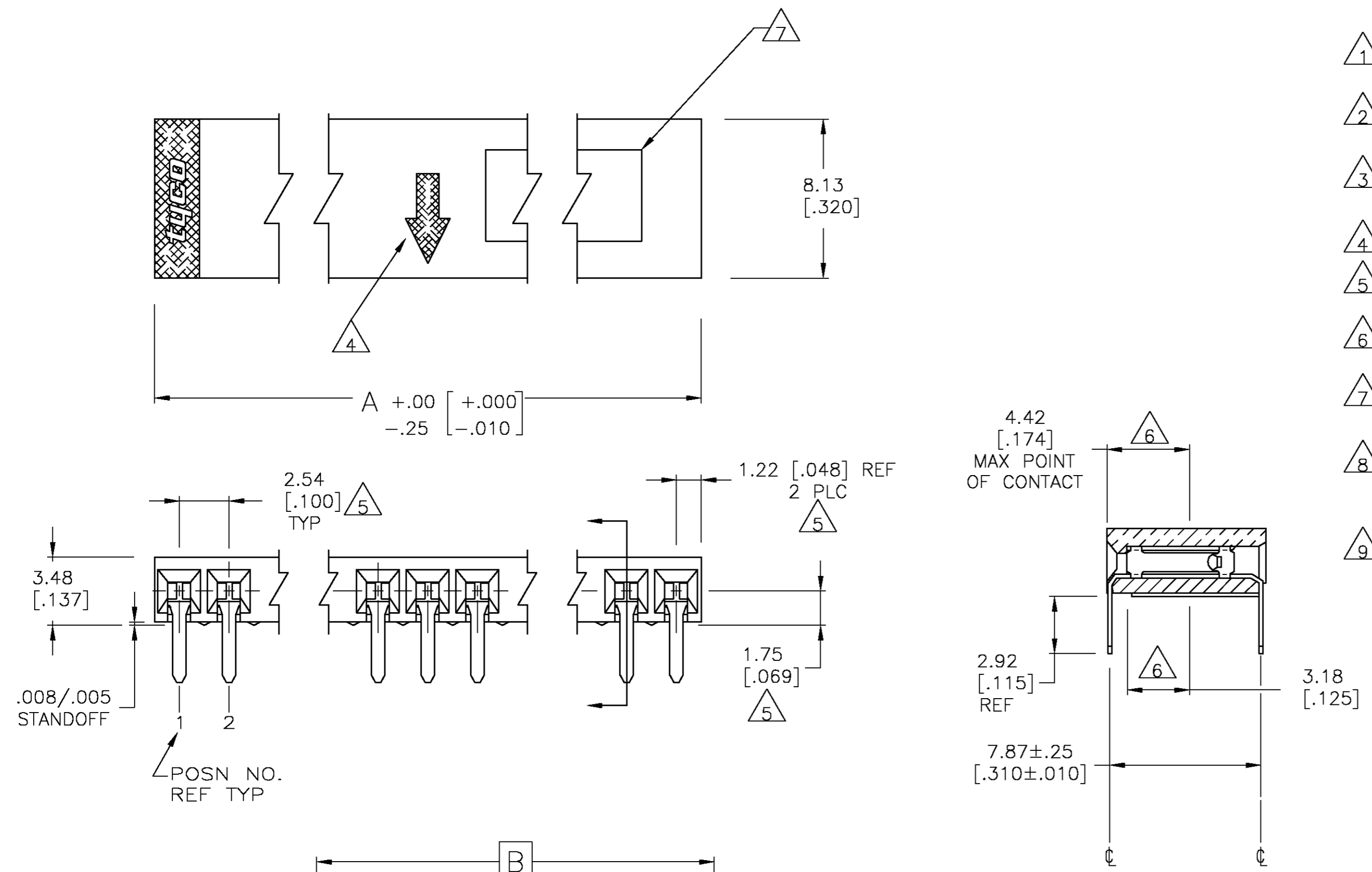


THIS DRAWING IS UNPUBLISHED. RELEASED FOR PUBLICATION
 © COPYRIGHT BY TYCO ELECTRONICS CORPORATION. ALL RIGHTS RESERVED.

LOC		DIST		REVISIONS			
P	LTR	DESCRIPTION		DATE	DWN	APVD	
C		EC 0G3C 0005 05		05FEB05	BSV	JRO	

- △1 HOUSING MATERIAL : GLASS FILLED, FLAME RETARDANT POLYESTER, COLOR-BLACK.
- △2 CONTACT MATERIAL: PHOSPHOR BRONZE.
- △3 CONTACT FINISH : DUPLEX PLATED 0.00076 [.000030] GOLD ON CONTACT AREA, .00381-.00762 [.000150-.000300] BRIGHT TIN-LEAD ON SOLDER TINES, ALL OVER 0.00127 [.000050] MIN. NICKEL.
- △4 MOLDED IN ARROW DESIGNATES THE MATING FACE OF THE CONNECTOR.
- △5 DIMENSIONS PERTAIN TO CAVITY CENTERLINES.
- △6 POINT OF MEASUREMENT FOR PLATING THICKNESS OF CONTACT AREA.
- △7 DATE CODE AND PART NUMBER MARKED IN APPROXIMATE LOCATION SHOWN.
- △8 CONTACT FINISH : DUPLEX PLATED 0.00076 [.000030] GOLD ON CONTACT AREA, .00381-.00762 [.000150-.000300] MATTE TIN ON SOLDER LEADS, ALL OVER 1.27 [.000050] MIN. NICKEL.
- △9 ROHS 2002 /95/EC COMPLIANT



△8	2, 6, 7, 9 THRU 14	35.56 [1.400]	38.10 [1.500]	15	△9	5-146769-2
△8	2 THRU 7, 9 THRU 14	35.56 [1.400]	38.10 [1.500]	15	△9	5-146769-1
△3	2, 6, 7, 9 THRU 14	35.56 [1.400]	38.10 [1.500]	15		146769-2
△3	2 THRU 7, 9 THRU 14	35.56 [1.400]	38.10 [1.500]	15		146769-1
FINISH	POSN NUMBERS OMITTED	B	A	NO OF POSN		PART NUMBER

THIS DRAWING IS A CONTROLLED DOCUMENT.

DIMENSIONS: mm [INCHES]	TOLERANCES UNLESS OTHERWISE SPECIFIED: 0 PLC ± - 1 PLC ± - 2 PLC ± - 3 PLC ± - 4 PLC ± - ANGLES ± - FINISH	DWN E. BRANDBERG 30-AUG-96 CHK B. STAUCH 30-AUG-96 APVD B. STAUCH 30-AUG-96 PRODUCT SPEC APPLICATION SPEC WEIGHT -	NAME B. STAUCH Tyco Electronics Corporation Harrisburg, Pa 17105-3608 AMP/ODU MOD II, RECTP ASSY, HORIZONTAL, 2.54[.100] CL, 1 ROW, CLOSED ENTRY, SPOC, 0.00076 [.000030] GOLD DUPLEX, END STACK SIZE A2 CAGE CODE 00779 DRAWING NO C=146769 RESTRICTED TO -
----------------------------	---	--	--

CUSTOMER DRAWING SCALE 5:1 SHEET 1 OF 1 REV C